

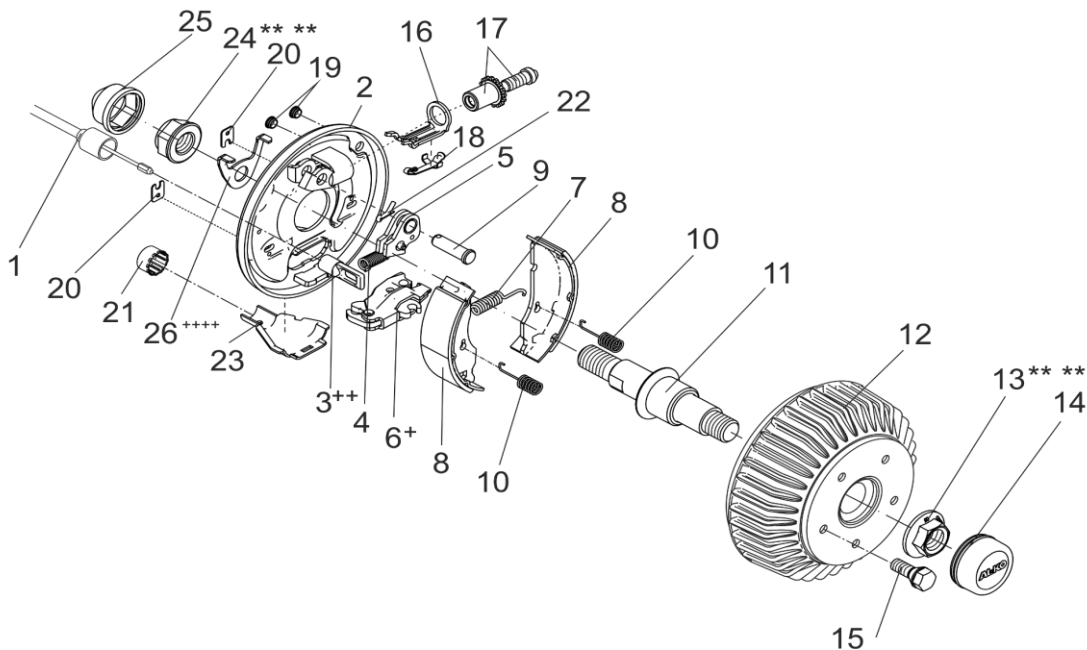
WHEEL BRAKE EURO1 2361

ETI- No. 811136

(Specify the order with the ETI No.)

AL-KO

Spare Parts



Item	Description	Part No.
1	MOUNTABLE BOWDEN CABLE 350 / 546 LONG	247281
	530 / 726 LONG	247282
	770 / 966 LONG	247283
	890 / 1086 LONG	247284
	1020 / 1216 LONG	247285
	1130 / 1326 LONG	247286
	1320 / 1516 LONG	247287
	1430 / 1626 LONG	247288
	1620 / 1816 LONG	247289
	1790 / 1986 LONG	247290
2	BRAKING PLATE LEFT	572372
	RIGHT	572373
3	CONNECTION EYE ++	604262
4	TENSION SPRING	2187370003
5	AUTO-REVERSE LEVER LEFT	571386
	RIGHT	571387
6	SPREAD HINGE LOCK +	571510
7	TENSION SPRING	2082000007
8	SET BRAKE JAW FOR AXLE INCL (COVER PLATE, TENSION SPRING, PRESSURE SPRING)	1213890
9	BEARING BOLT	368651
10	PRESSURE SPRING	2088800003
11	STUB AXLE 1300 KG UP TO 1800 KG	582541

Item	Description	Part No.
12	BRAKE DRUM COMPLETE WITH BEARINGS	
	(ENGLAND) Ø112X5 M12X1.5 - 160MM MOUNTING FACE	573194
	(ENGLAND) Ø112X5 M12X1.5 - 215MM MOUNTING FACE	695391
	Ø140X5 M14X1.5	578834
	Ø165.1X5 M16 BOLT	578835
	SPARE PARTS SET: 1X BEARING, 1X CIRCLIP, 1X FLANGE NUT	1224805
13	FLANGE NUT M27X2 ***	582506
14	END CAP Ø65	582505
15	WHEEL BOLT SPHERIC M12X1.5	2081670020
	CONUS M12X1.5	2081670018
16	BOW PRESSURE	368361
17	ADJUSTING SCREW AND THE ADJUSTING NUT	21873708
18	COMPOUND SPRING	368405
19	STOPPER	373245
20	COVER PLATE	2382610002
21	PROTECTIVE CAP	371389
22	SPLINT PIN DIN 94 4X20-VZ	700192
23	CUP	371387
24	HEX NUT M30 (SELF-LOCKING) ***	703112
25	CAP	582542
26	WASHER FOR DRIVE AXLE +++++	1652028

+ THE CENTRE OF ROTATION OF THE BRAKE LEVER MUST BE FIXED ON THE SAME SIDE AS THE BOLT OF THE AUTO-REVERSE.

++ THE OPEN SIDE OF THE CONNECTION EYE FOR THE BOWDEN CABLE MUST SHOW TO THE CENTRE OF ROTATION OF THE BRAKE LEVER.

++++ SPECIAL VERSION FOR DRIVE AXLE (POS.24 WITH LOCTITE 243 SECURED, TIGHTENING TORQUE 850Nm

*** FOR SAFETY REASONS: SELF-LOCKING NUT AND SCREW WITH CHEMICAL SELF-LOCKING MUST BE USED ONCE. AFTER UNTIGHTEN ALWAYS USE A NEW SPARE.

THE RETAIL OF INDIVIDUAL BRAKE SHOES IS NOT PERMITTED BY EU DIRECTIVE FROM 1st OF OCTOBER 2002.

ATTENTION: THE SET INCLUDES FOUR BRAKE SHOES AND THE APPENDANT TENSION SPRINGS, PRESSURE SPRINGS AND COVER PLATES.

provided	ETI-No.	changed	Change No.	Reason of the change	Revisions-No.
12.07.95	811136_en	11.01.2010	FREIGABE		A
		02.02.2011/HI	16422	SEE CHANGE	B
		07.01.2013/ÖJ	17280	DESIGN	C
		28.06.16/ÖJ	19339	BRAKE DRUM FOR WHEEL BRAKE 2361 Ø112x5-M12 WITH MOUNTING FACE 215MM ADDED	D